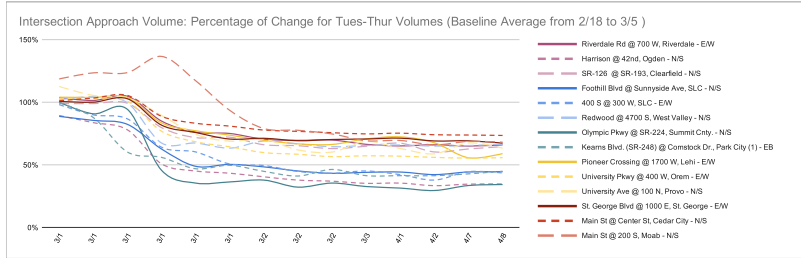


[See data from UDOT's Freeway Sensors](#)

All Regions



(1) Kearns Blvd @ Comstock has had communication issues during this period. Only 1 week was available to create baseline. 3/12/2020 total volume was estimated from measured half-day.

Timeline:

- 3/6/2020 Governor Herbert signs emergency declaration
- 3/13/2020 Murray School District closure starts
- 3/16/2020 Statewide K-12 school closure starts (expires May 1)
- 3/18/2020 Earthquake
- 3/26/2020 AM snow
- 3/27/2020 Summit County issues stay home order (expires May 1)
- 3/28/2020 Governor Herbert implements "Stay Home, Stay Safe" guidance (expires April 13)
- 3/28/2020 Salt Lake City issues stay home order (expires April 13)
- 3/28/2020 Arches and Canyonlands National Parks start closure
- 3/28/2020 AM snow
- 4/2/2020 AM snow
- 4/2/2020 NV issues stay home order
- 4/3/2020 Zion NP closed to public at end of day

Data Source:

Intersection approach volume is collected by UDOT-owned Matrix sensors, maintained by the Traffic Management Division. These sensors are used to detect vehicle presence, vehicle counts, and yellow-red actuations. The data can be accessed via the ATSPM website <http://udottraffic.utah.gov/ATSPM>. The metric applied here is Approach Volume using Matrix Stopbar detection.

Region	Signal ID	Primary	Secondary	Detection	Approaches	Sum of the Primary Road Daily Approach Volumes (Tue - Thurs)																											
						City of Truckee Average (Main Approach Directions Total Volume (Data Chart))																											
						Tue	Wed	Thu	278	279	280	281	282	283	284	285	286	287	288	289	290	291	292	293	294	295	296	297	298	299	300	301	302
1	5006	Riverside Rd @ 700 W. Riverside - E/W	Riverside Rd	700 W. Riverside	Main	EW	42,724	42,365	44,634	41,276	42,988	44,220	43,550	43,877	45,380	43,348	42,890	44,295	44,368	43,954	46,818	46,339	47,783	47,396	47,156	47,095	47,156	47,156	47,156	47,156	47,156	47,156	47,156
1	5026	Hanson @ Ghid. Ogden - NS	Hanson	42nd. Ogden	Main	NS	28,577	29,303	28,865	31,941	31,273	31,420	30,531	30,621	30,807	28,656	28,665	28,697	28,678	28,659	29,146	29,076	29,076	29,076	29,076	29,076	29,076	29,076	29,076	29,076	29,076	29,076	29,076
1	5118	SR-126 @ SR-163, Clearfield - NS	SR-126	SR-163, Clearfield	Main	NS	21,710	21,405	21,912	21,956	21,148	21,718	21,370	21,314	22,065	21,805	21,752	21,954	21,503	21,207	21,767	21,743	21,743	21,743	21,743	21,743	21,743	21,743	21,743	21,743	21,743	21,743	21,743
2	7211	Foothill Blvd @ Burnstone Ave, SLC - NS	Foothill Blvd	Burnstone Ave, SLC	Main	NS	49,840	50,547	50,455	49,269	49,461	51,375	51,217	49,938	49,240	50,903	50,353	50,353	44,285	43,261	41,814	41,300	42,464	42,464	42,464	42,464	42,464	42,464	42,464	42,464	42,464	42,464	42,464
2	7241	400 S @ 300 W, SLC - EW	400 S	300 W, SLC	Main	EW	28,792	28,462	28,961	29,262	29,338	28,346	28,497	28,158	29,683	29,412	29,610	29,610	23,443	22,925	22,989	22,926	24,113	23,550	23,550	23,550	23,550	23,550	23,550	23,550	23,550	23,550	23,550
2	7307	Redwood @ 4700 S, West Valley - NS	Redwood	4700 S, West Valley	Main	NS	26,557	26,617	26,711	25,643	26,680	27,319	27,079	26,074	27,174	26,648	26,798	26,639	27,109	27,826	26,628	27,952	27,981	26,959	26,959	26,959	26,959	26,959	26,959	26,959	26,959	26,959	26,959
2	7703	Olympic Pkwy @ 249.224, Summit City - NS	Olympic Pkwy	249.224, Summit City	Main	NS	34,581	36,027	36,868	33,962	34,903	36,837	35,299	37,740	39,943	39,363	39,363	39,363	34,636	32,747	34,654	34,654	34,654	34,654	34,654	34,654	34,654	34,654	34,654	34,654	34,654	34,654	34,654
2	7714	Kaena Blvd (SR-248) @ Cornelia Dr, Park	Kaena Blvd (SR-248)	Cornelia Dr, Park	EB ONLY		10,910	11,183	10,927							10,910	11,163	10,927	10,984	9,818	6,000	6,126	5,262	5,441	4,906	4,603	5,078	4,603	4,606	4,534	4,687	5,028	
3	6037	Pioneer Crossing @ 1700 W, Lahi - E/W	Pioneer Crossing	1700 W, Lahi	Main	EW	50,011	49,812	50,959	48,840	49,070	49,630	50,725	48,854	49,915	51,099	51,203	52,132	52,087	51,566	52,565	41,837	38,386	37,343	34,956	33,191	33,952	35,422	36,978	34,258	27,909	29,900	
3	6319	University Pkwy @ 400 W, Drinn - E/W	University Pkwy	400 W, Drinn	Main	EW	52,416	52,299	54,050	50,970	51,640	54,261	52,782	52,822	53,883	53,887	53,625	53,605	53,893	53,975	54,518	49,386	48,869	48,861	47,413	39,447	39,697	39,079	39,443	39,332	29,102	29,209	
3	6408	University Ave @ 100 N, Phono - NS	University Ave	100 N, Phono	Main	NS	25,729	27,518	28,077	22,258	22,196	26,997	27,222	27,177	28,761	27,790	28,181	28,732	29,008	29,044	29,747	23,653	20,487	19,884	18,172	17,076	17,307	17,726	17,936	18,003	17,400	17,454	
4	8121	St. George Blvd @ 1000 E, St. George - E/W	St. George Blvd	1000 E, St. George	Main	EW	31,848	32,018	33,347	33,001	33,045	33,893	31,777	31,883	33,031	32,368	32,447	34,170	32,008	32,076	34,321	28,072	24,324	23,990	22,727	22,225	23,473	22,545	22,877	23,986	22,081	21,812	
4	8209	Main St @ Center St, Cedar City - NS	Main St	Center St, Cedar City	Main	NS	22,317	22,041	22,489	22,000	21,956	22,150	21,608	19,876	22,344	22,840	22,653	23,091	22,509	22,603	23,745	19,751	18,970	18,340	17,926	16,849	17,655	16,850	16,828	16,688	16,434	16,208	
4	8309	Main St @ 200 S, Moab - NS	Main St	200 S, Moab	Main	NS	15,132	15,433	15,674	14,516	14,440	14,648	14,426	14,686	15,615	15,455	14,873	16,757	17,965	16,074	15,407	20,660	18,105	14,882	11,977	11,908	11,726	10,503	10,742	10,555	10,425	10,531	

