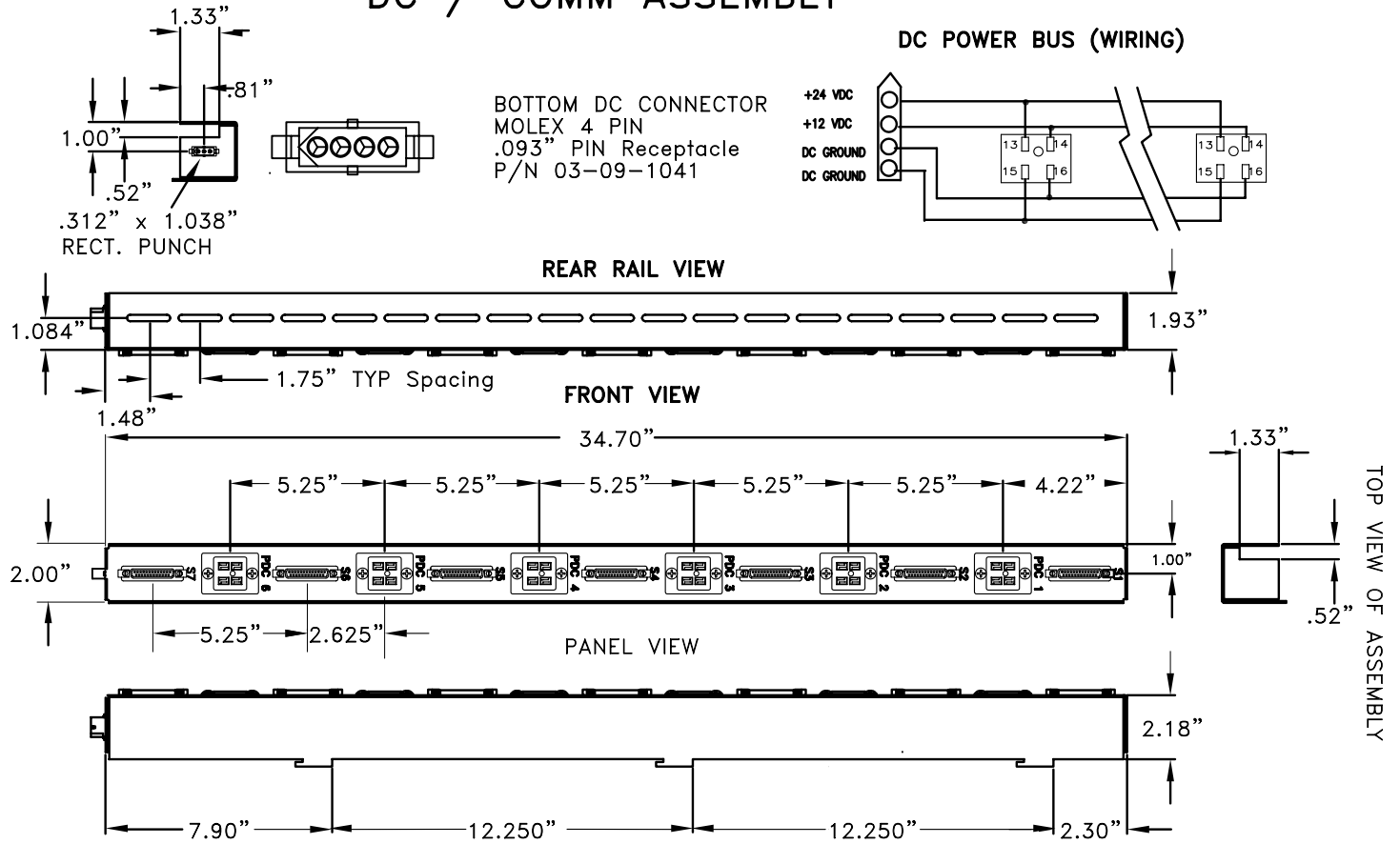
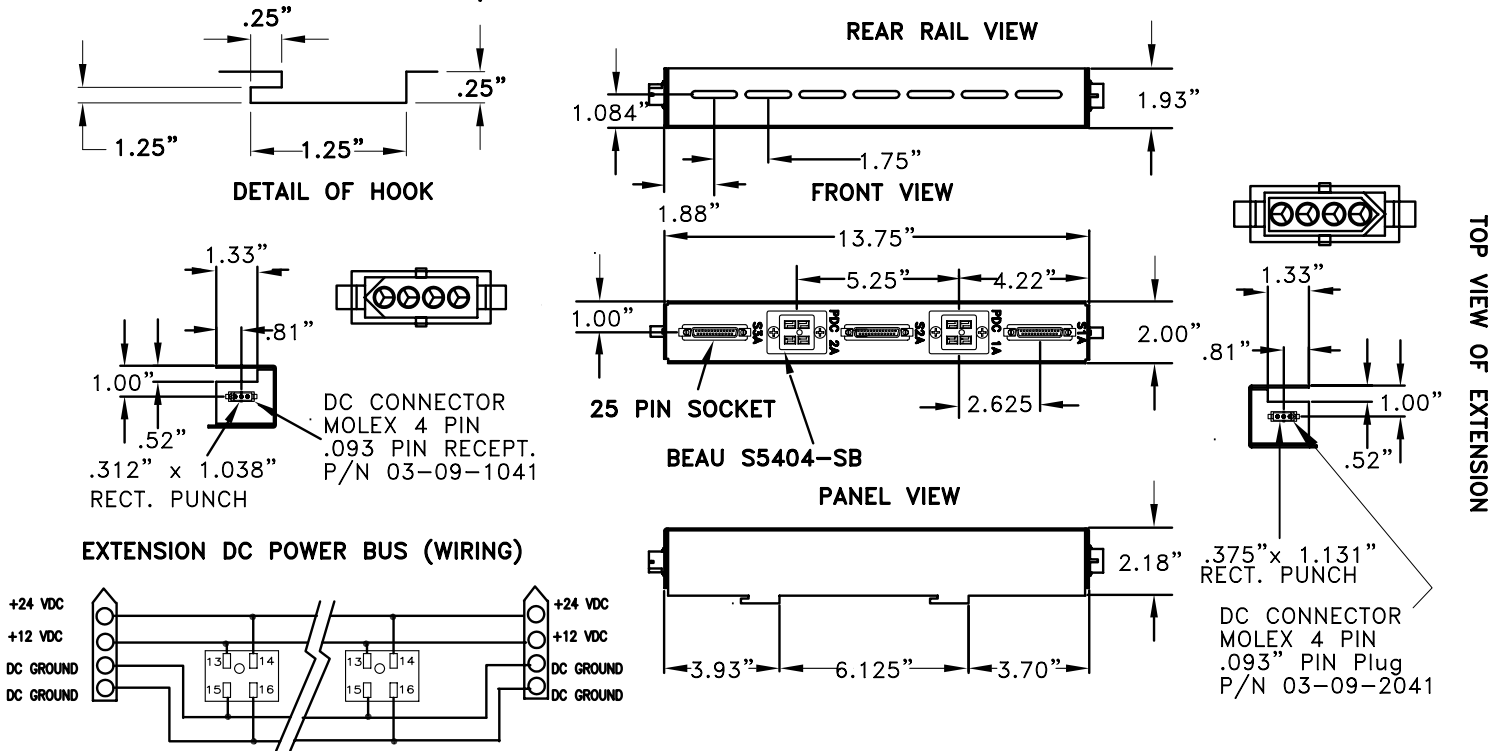


DC / COMM ASSEMBLY

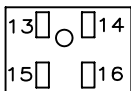


DC / COMM EXTENSION



NOTES:

- +12 and +24VDC wire shall have a minimum gauge of 14
- SP1/SP3 shall be equivalent to CAT 5 in performance
- PDC 1-6 and 1A-2A are BEAU S5404-SB or equal



TITLE: DC POWER/COMMUNICATIONS ASSEMBLY & EXTENSION	
Rev Date 09-19-03	6-5-17
MAY 8, 2003	