

County Roads

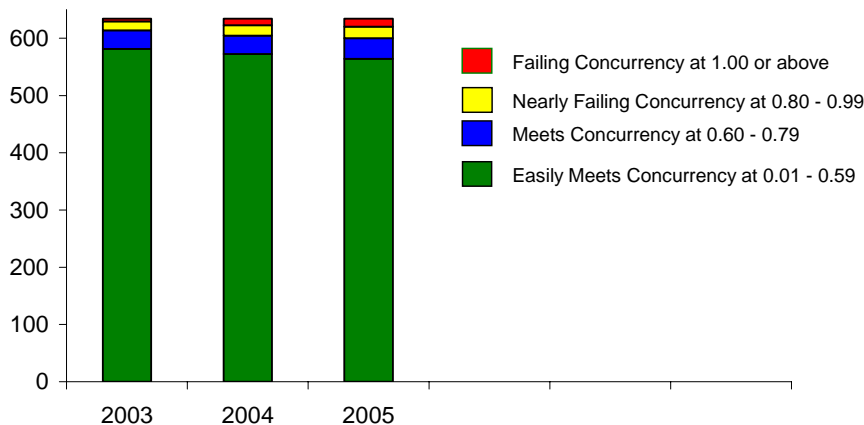
Performance Measure - Miles of Congested Arterials

Addressing congested County Arterials is critical to the economic well being of Pierce County and the quality of life provided for citizens who live and travel throughout the County. The Growth Management Act and County Laws require that overly congested arterials be “corrected” within 6 years of the arterial “failing” the acceptable level of congestion on the arterial. In Pierce County, an arterial is defined as a major county roadway that connects to a freeway or another arterial and “corrected” is defined as a situation where a project to correct the overly-congested situation is under construction.

A County arterial is determined to be overly-congested when the average daily traffic flow is greater than the amount of traffic the arterial is able to serve (the average daily volume or “v”, is greater than the “service level threshold, or “s”). This v/s ratio is also known as the concurrency threshold. The goal is that all segments of overly-congested arterials are “corrected” within 6 years of failing concurrency.

Congested Arterials

Number of Pierce County Arterials Miles
Failing Concurrency 2003-2005



Performance

Goal: A project will be included in the Transportation Improvement Program (TIP) to mitigate all arterial segments failing concurrency.

The current method of measuring congestion began in 2003. The data above shows a trend of more miles of arterial becoming congested each year although that rate of growth is slowing.

In 2005, 4% of County arterial road segments failed concurrency and nearly 6% were close to failing. Currently, the 6-Year Transportation Improvement Program plan includes 6 County arterial road segment construction projects. In 2006, the plan is to have all 6 projects under design to correct the concurrency failure. This plan covers over 20 arterial miles or 10% of total County arterial miles.